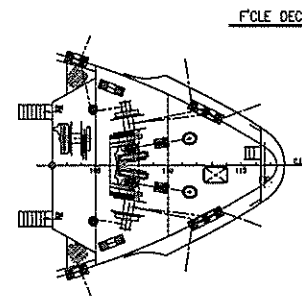
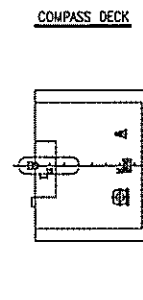
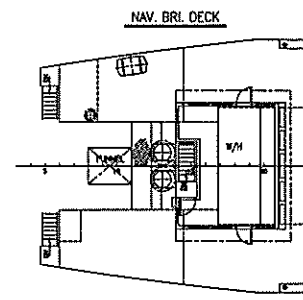
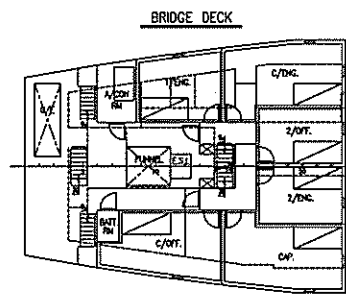
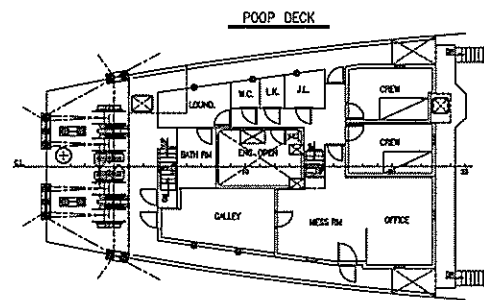
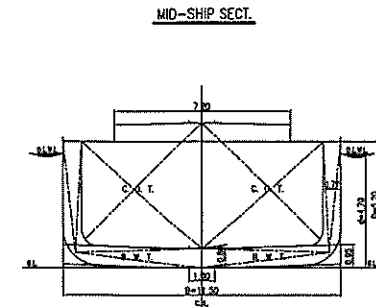
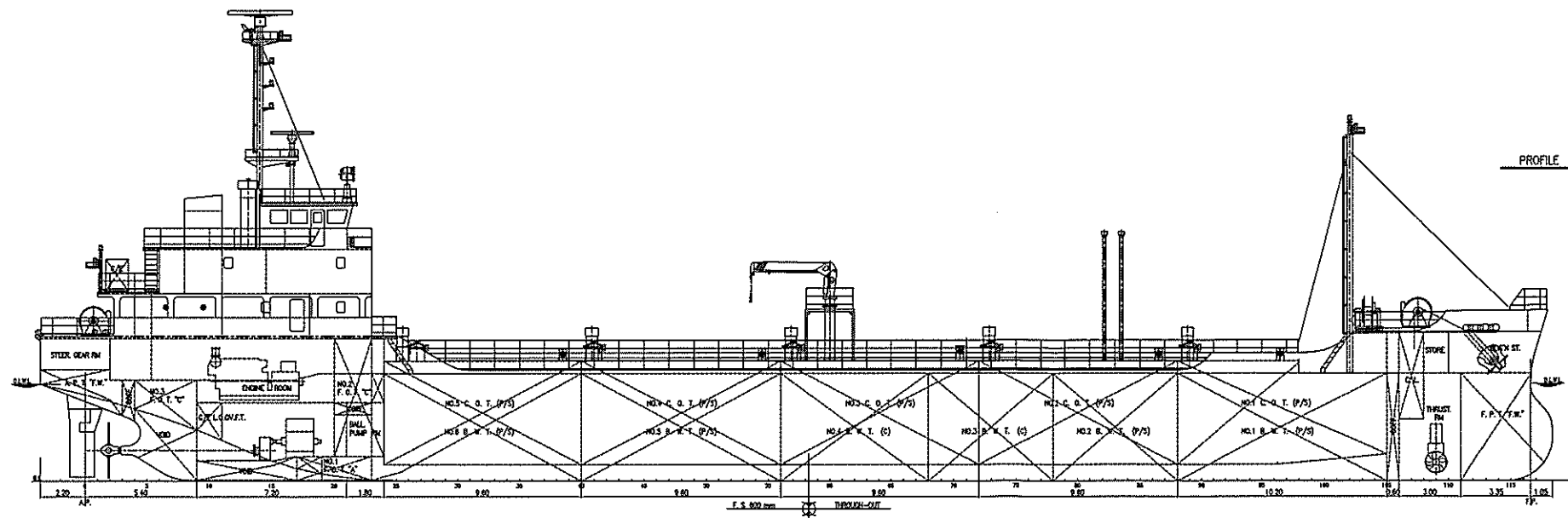


2軸型 SES 749 トン型白油タンカー

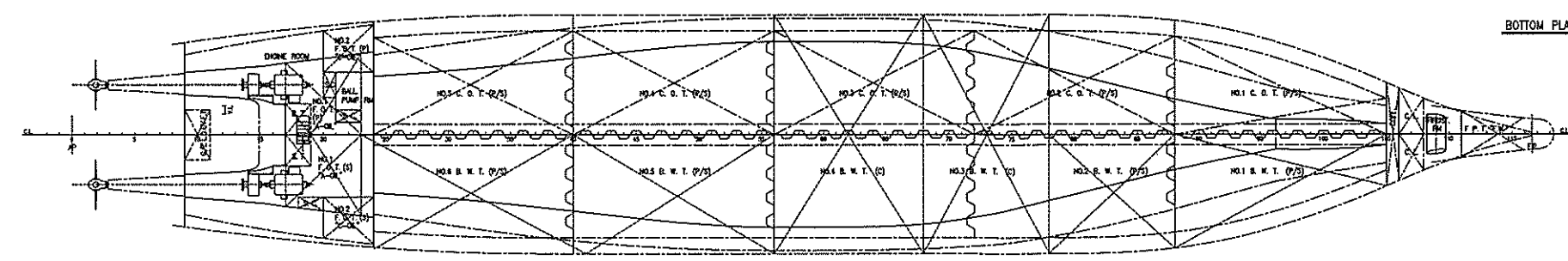
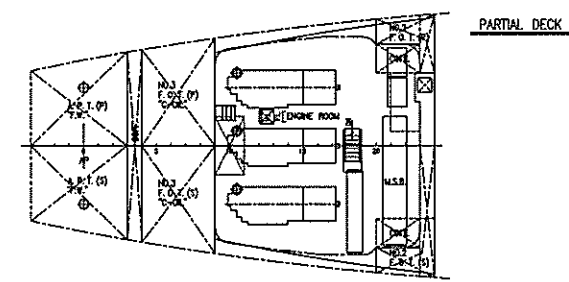
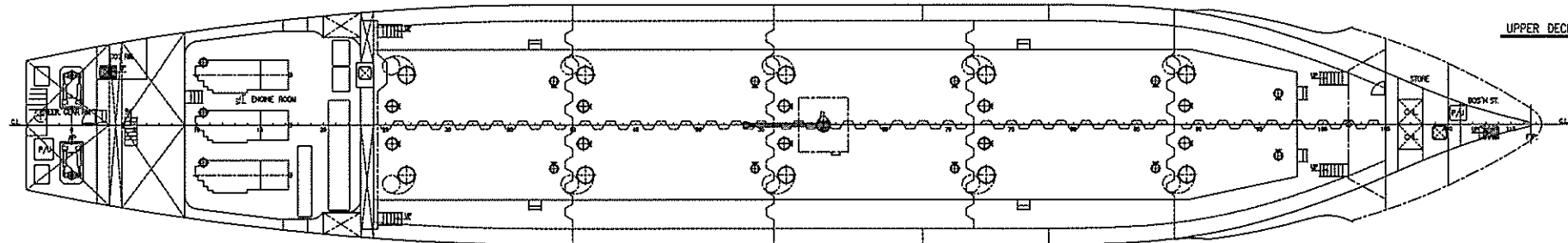
1. 一般配置図

2012年3月9日



**PRINCIPAL PARTICULARS**

LENGTH (OVERALL)	73.20 M.
LENGTH (B.P.P.)	69.95 M.
BREADTH (MOULDED)	11.50 M.
DEPTH (MOULDED)	5.20 M.
DESIGNED DRAFT (MOULDED)	4.70 M.
GROSS TONNAGE	749 GT.
DEADWEIGHT	abt 1780 T.
CARGO TANK CAPACITY	abt 2014 M <sup>3</sup>
MAIN ENGINE (GEN. ENG.)	MCR 680kW x 3 SETS.
SPEED (NAV.)	abt 12 KNOTS.
COMPLEMENT	8 P.
CLASS	NK NS* (TOB61) (ESP) MNS*
NAVIGATION AREA	COASTING AREA



2軸型SES 749トン型白油タンカー  
 一般配置図  
 AI S-1/150