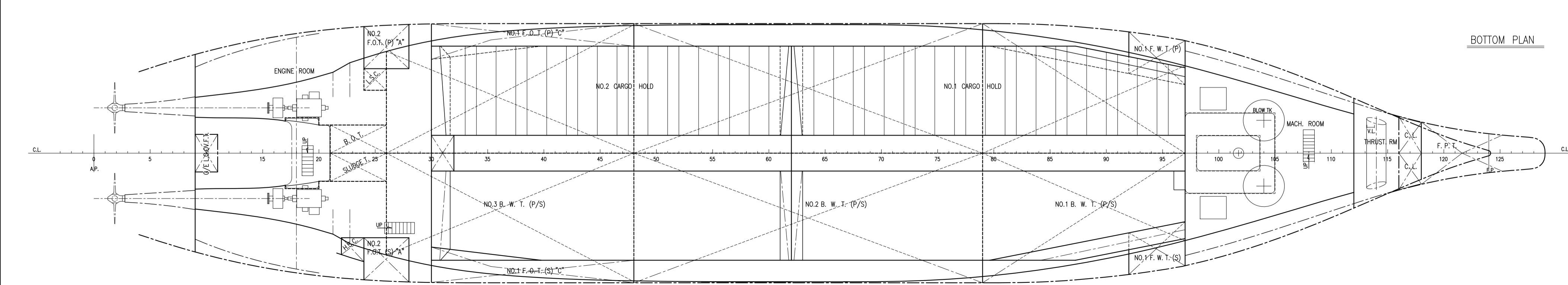
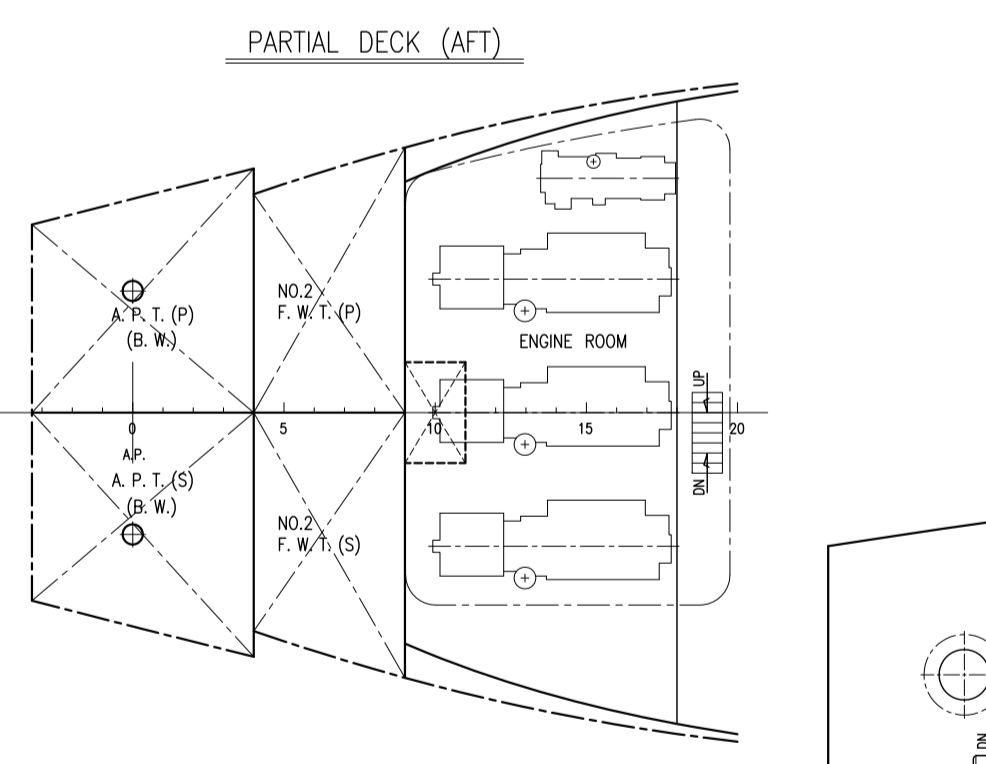
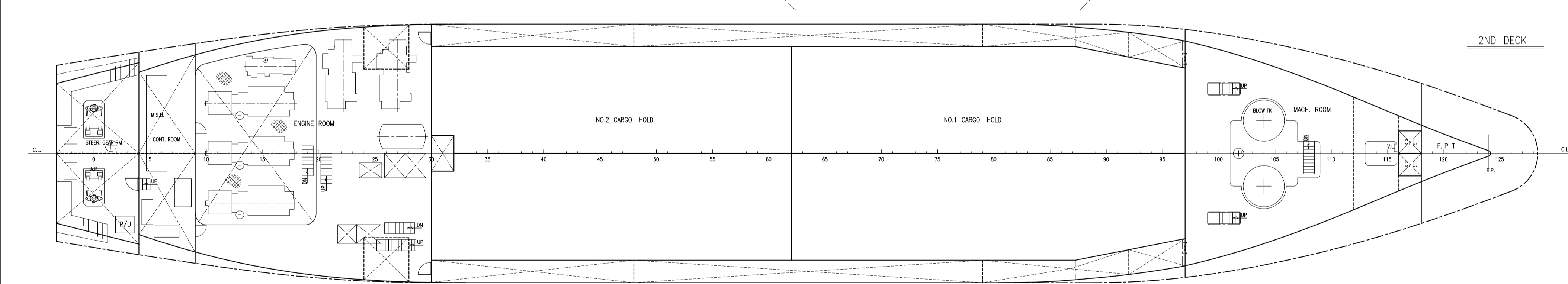
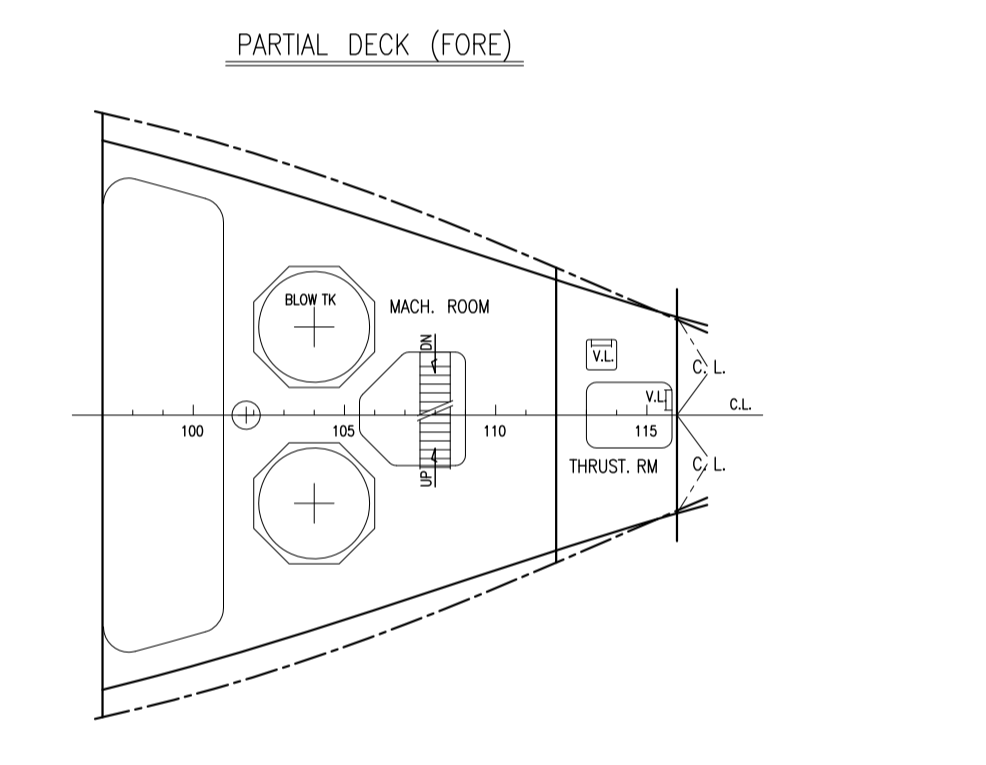
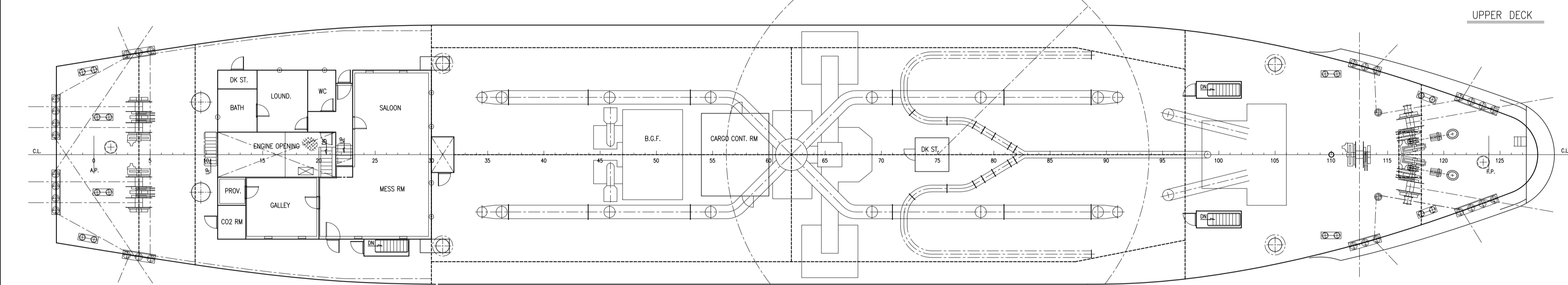
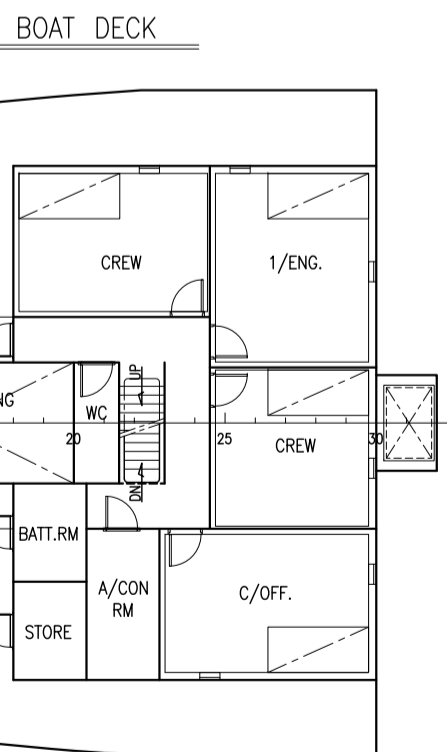
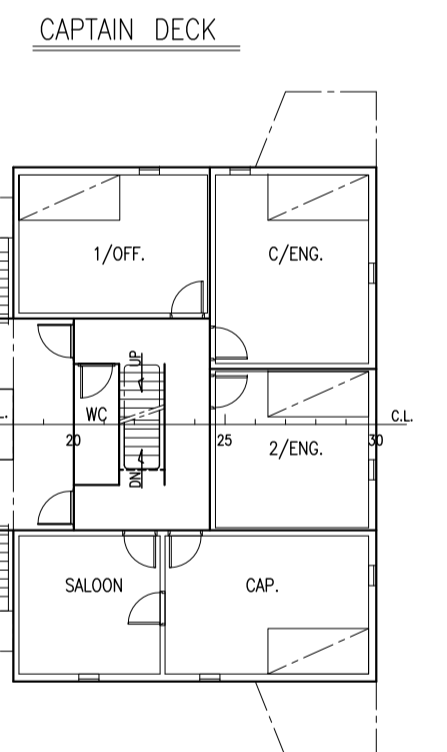
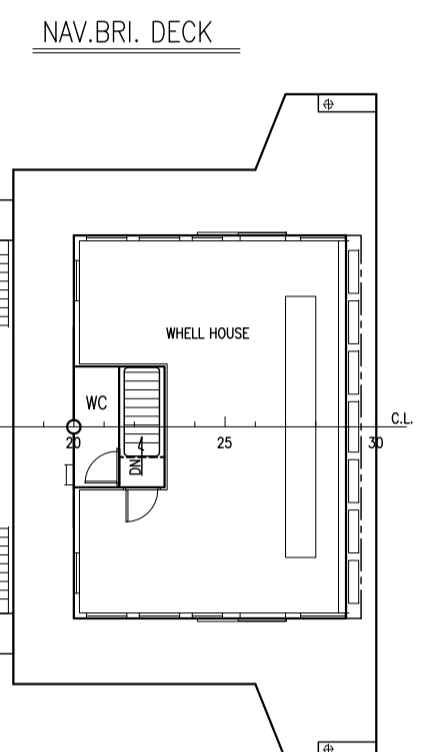
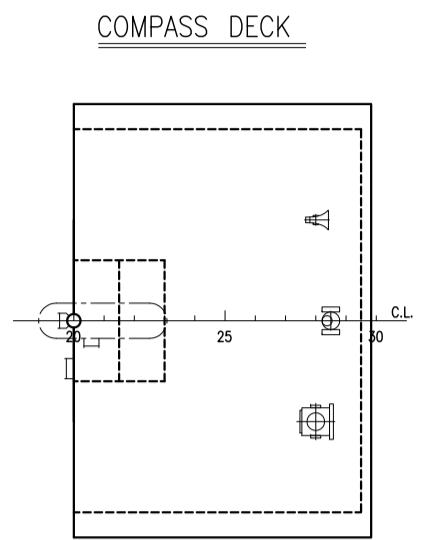
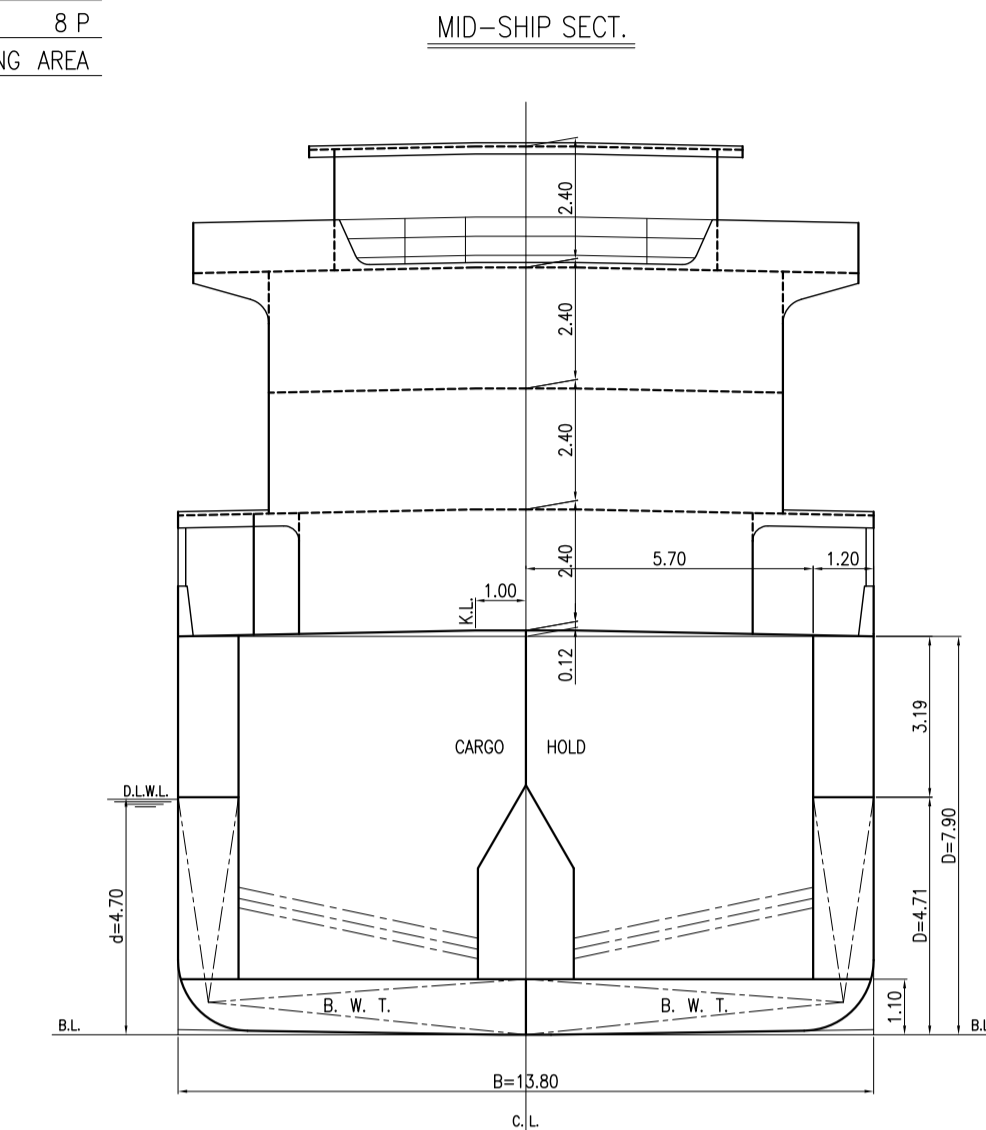
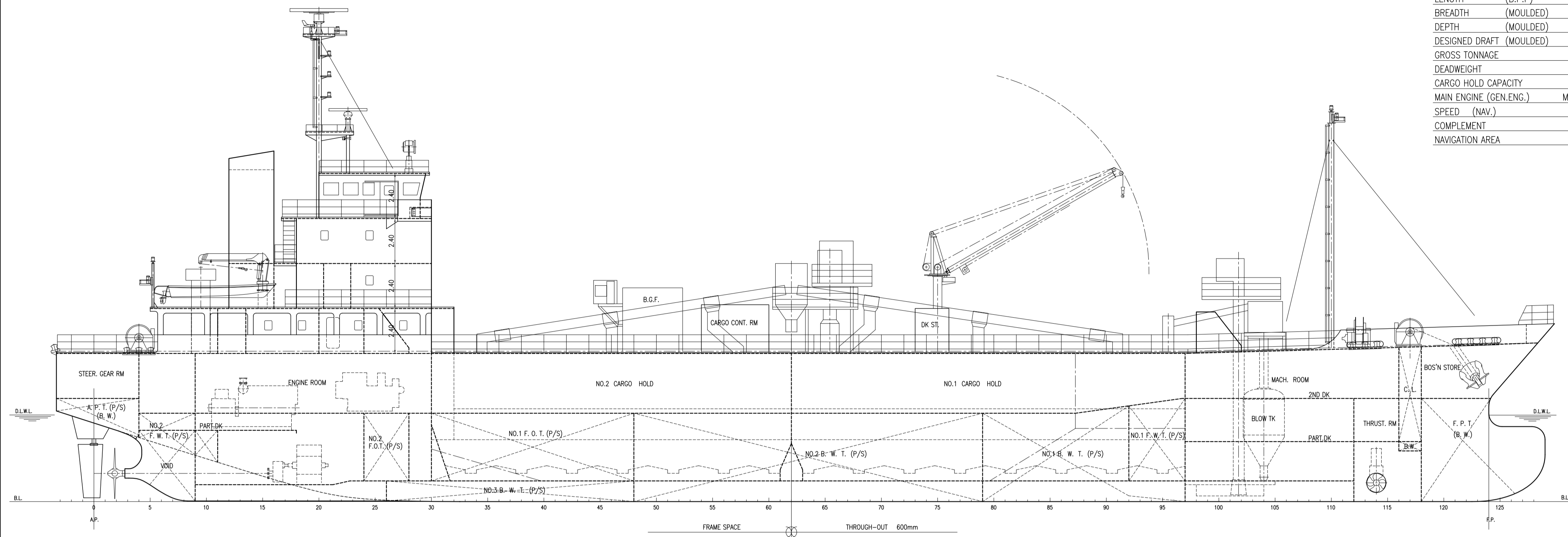


2軸型 SES 749 トン型セメント運搬船

1. 一般配置図

2012年3月9日

PRINCIPAL PARTICULARS	
LENGTH (OVERALL)	abt' 79.90 M
LENGTH (B.P.P)	74.40 M
BREADTH (MOULDED)	13.80 M
DEPTH (MOULDED)	7.90/4.71 M
DESIGNED DRAFT (MOULDED)	4.670 M
GROSS TONNAGE	abt' 745 GT
DEADWEIGHT	abt' 2250 T
CARGO HOLD CAPACITY	abt' 2400 M3
MAIN ENGINE (GEN.ENG.)	MCR 880KW x 3SETS
SPEED (NAV.)	abt' 12.5 KNOTS
COMPLEMENT	B P
NAVIGATION AREA	COASTING AREA



2軸型SES 749トン型セメント船

一般配置図